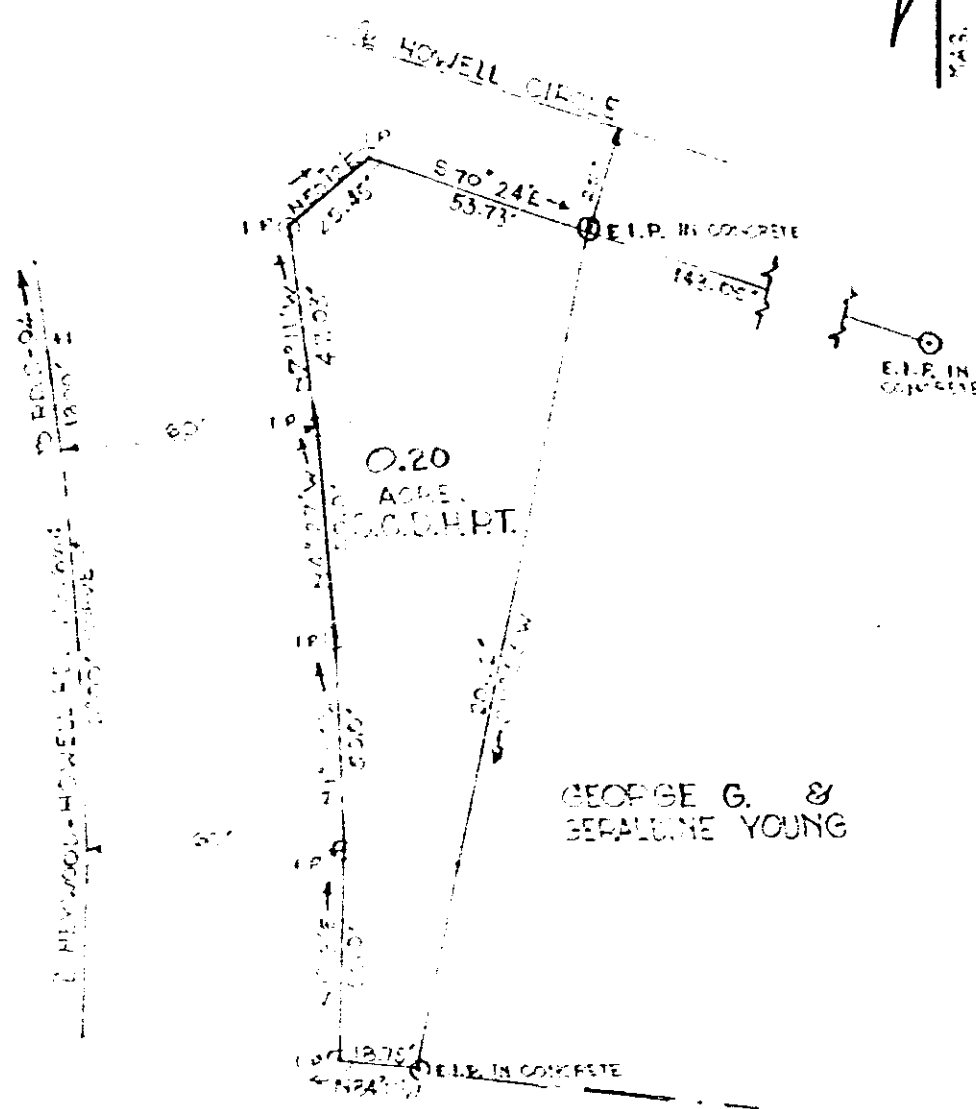


PORTION OF MAP DEPT. 1, OBTAINED  
BY F.S.D. 5-24-74 FROM  
HENRY P. & DAVID C. BULLOCK

JUNE 2, 1978

BOOK 1121 PAGE 511



PROPERTY OF S.C.D.H.P.T.  
TO BE CONVEYED TO GEORGE G. & GERALDINE YOUNG  
FILE: 23-664 PROJ: SUUS 2687(2)  
GREENVILLE COUNTY

FIELD & PLATTED BY: J.E. O'SULLIVAN ENG. ASST.

Etton S. Allen - Reg. L.S. No. 1000

SCALE - 1" = 50'

4328 RV-2